



*Buckets, Couplers and Attachments
that Deliver the Maximum*

**2015 - 2016 Catalog
With New Products**

**Proudly
Made In the USA**



Superior Performance and Durability



TAG Manufacturing, Inc. • Chattanooga, TN



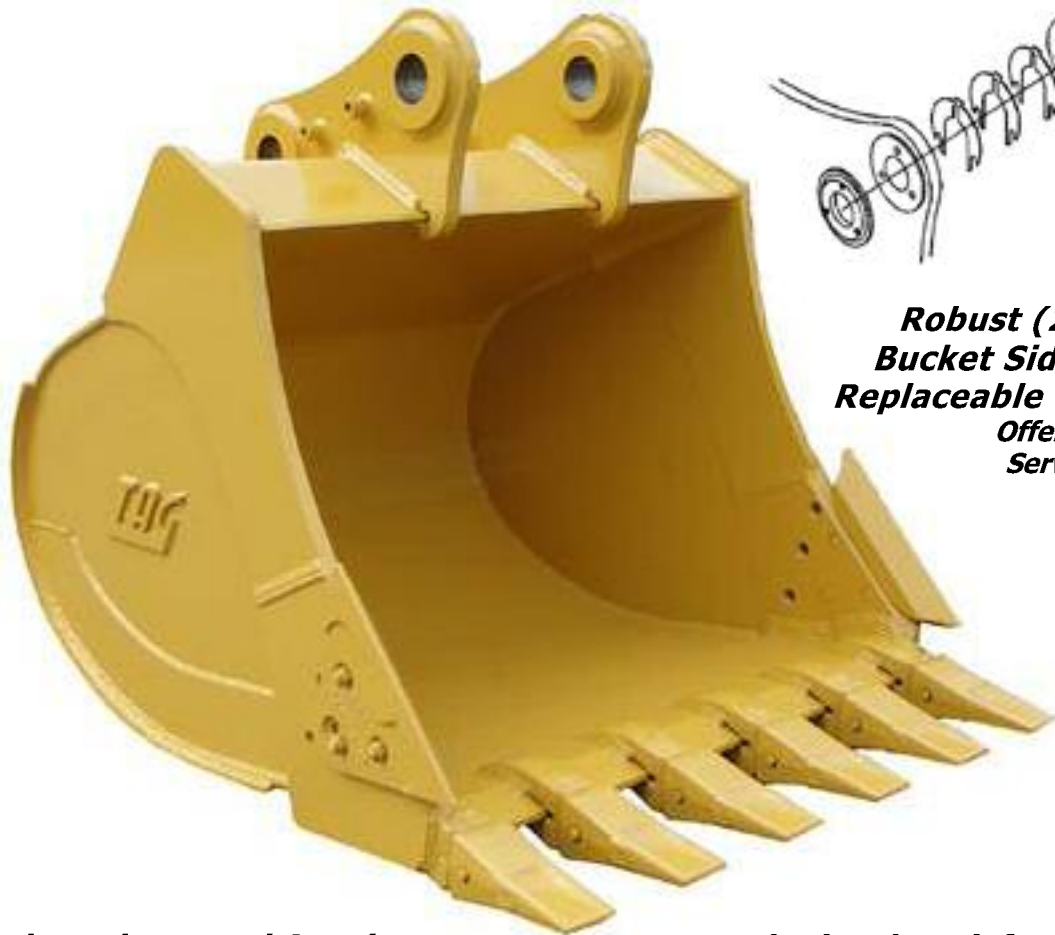


High Performance Heavy-Duty Excavator Buckets

TAG Buckets Deliver Quicker Loading Times and Greater Yardage on each Pass With Less Wear on the Bucket Because of the Dual Tapered and Double Radius Design

HP 10 Series	Both Heavy-Duty and Severe-Duty Buckets Share the Same Double-Bottom Design and Features
---------------------	--

Innovative Play-Adjustment Design
Thumb-Tab "Horse-Shoe" Shims
No Need to Remove Bucket to Make Adjustments, Eliminates "Top-Hat" Bushing Failures



Robust (2) Piece Bucket Sides With Replaceable Corners
Offers Greater Serviceability

Clear Smooth Unobstructed Opening
One-Piece Bucket Shell Increases the Ease of Loading and Unloading Improving Machine Production

Internal Triangle Reinforcements
for Superior Strength Improves Ear Retention and Reduces Bucket Flexing and Twisting

Superior Performance and Durability

TAG Manufacturing, Inc. • Chattanooga, TN





High Performance Severe Duty Excavator Buckets

TAG Buckets Deliver Quicker Loading Times and Greater Yardage on each Pass With Less Wear on the Bucket Because of the Dual Tapered and Double Radius Design

HP10 Series	Both Heavy-Duty and Severe-Duty Buckets Share the Same Double-Bottom Design and Features
--------------------	--

Full Width Replaceable Transverse Wear Strips Standard on Severe-Duty Buckets

Larger Triangle Transfers the Digging Forces Over a Much Larger Area to Reduce Failures

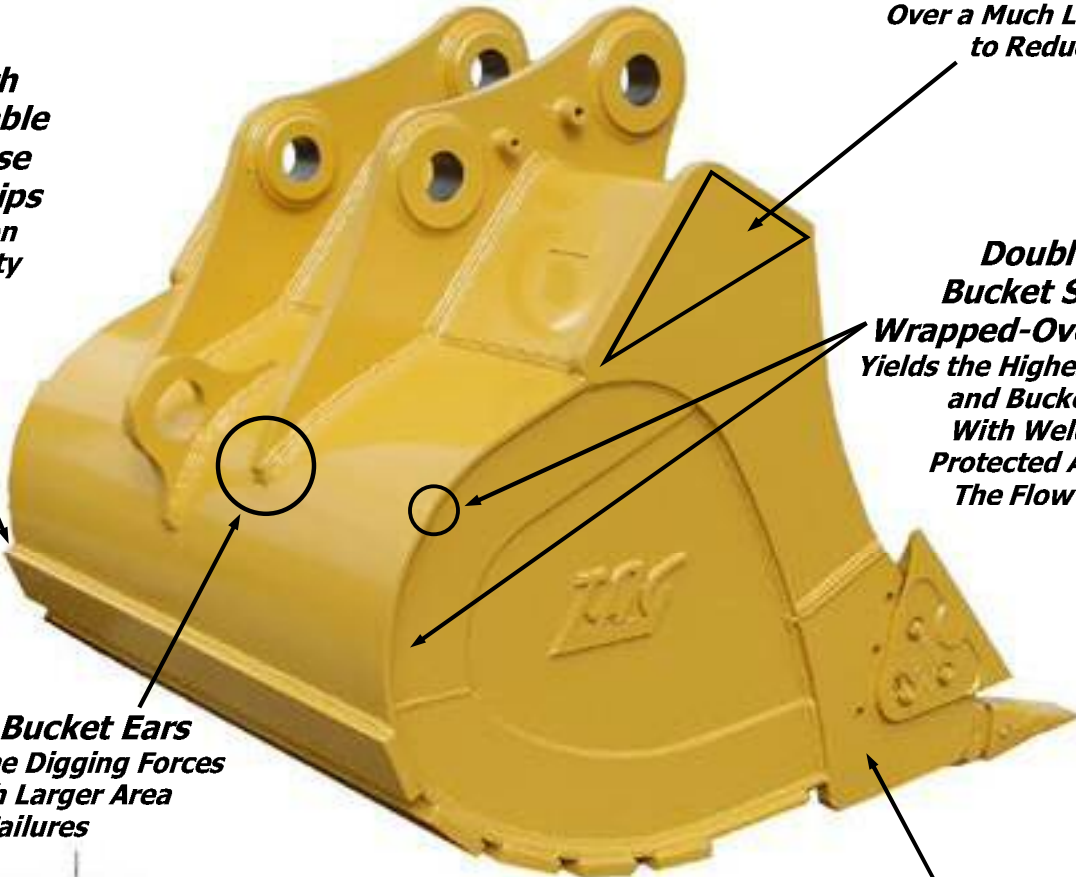
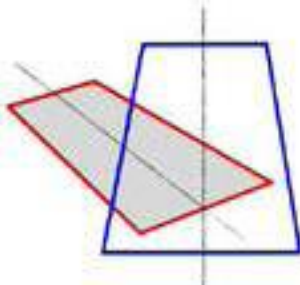
Double-Bottom Bucket Shell With Wrapped-Over Design Yields the Highest Strength and Bucket Integrity With Welds That Are Protected Away From The Flow of Material

Extended Bucket Ears Transfers the Digging Forces Over a Much Larger Area to Reduce Failures

Double Radius - Dual Tapered Profile Offers Greater Bucket Loading Fill Factors and Increased Machine Production in all Soil Conditions

Router Side Plate Maintains the Clean Dual Taper Design with Superior Retention Strength of the Cutting Edge to the Side Plate

Material Just "Boils" Into the Bucket



Superior Performance and Durability

TAG Manufacturing, Inc. • Chattanooga, TN





Super Extreme Duty Mining Buckets

Increased Production with Ease of Loading and Un-loading with TAG's Exclusive Dual-Radius, and Dual-Tapered Design Buckets



Series

2 - Plate Design Plus Transverse Wear-Strips

3 Layers of Wear Material

Much Increased Thickness of Abrasion Resistant Alloys on Outer-Skin and Transverse Wear Strips

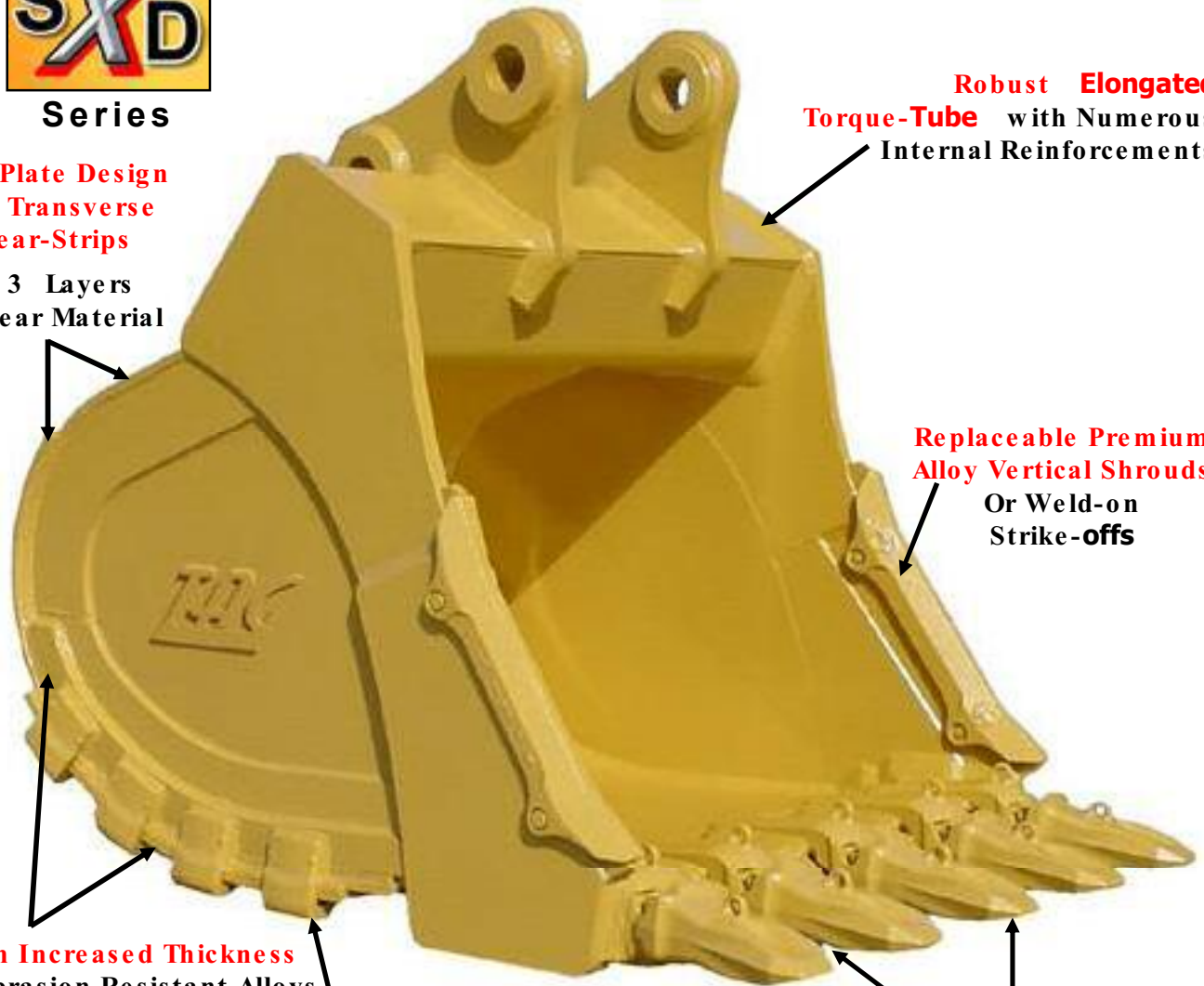
Added Wear Material and Protection with Premium Alloy Heel-Plate Castings

Unique Router Design Offers Greatly Improved Cutting Edge Retention

Increased Cutting Edge Thickness with Larger Shanks and Teeth for Higher Reliability and Greater Wear Material

Robust Elongated Torque-Tube with Numerous Internal Reinforcements

Replaceable Premium Alloy Vertical Shrouds Or Weld-on Strike-offs



Maximize Your Mining Production with our S D Series Super Extreme Duty Mining Buckets

Superior Performance and Durability

TAG Manufacturing, Inc. • Chattanooga, TN





Integral Mantis™ Thumbs For Severe - Duty Excavator Buckets

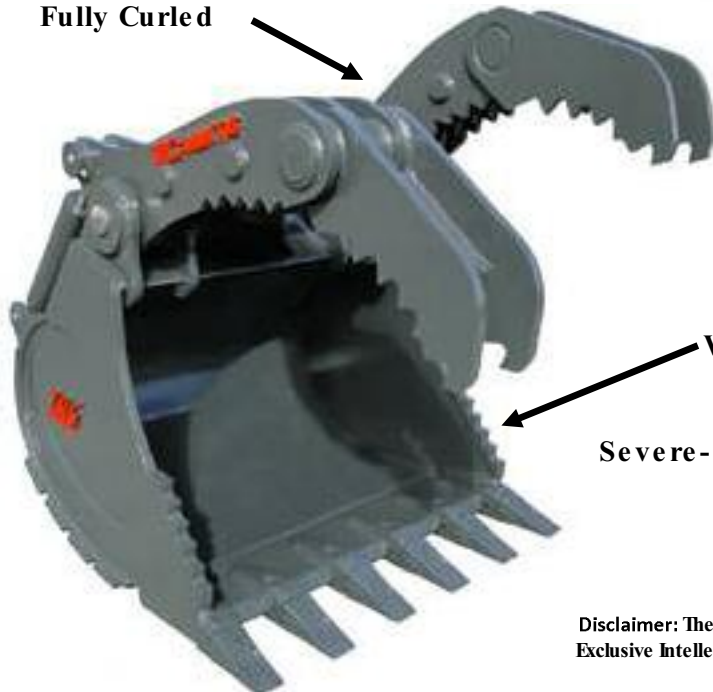
Great For Multi-Machine Fleets, or Rental Operations

Designed For 30,000 lbs. – 100,000 lbs. Excavators with Quick-Couplers

Twin Robust Cylinders
for Added Strength and
Reliability, **ASTM A-514 T-1**
Mantis **Arched Thumb** for
Higher Impact Resistance
and Greater Strength

Quick and Easy
Attachment Installation
Requires No Welding
Includes Quick-Coupler
Mounting Pins

Independent Mantis Thumbs
Allows Full Clearance
to **Straddle** the Dipperstick
and Boom When the Bucket is
Fully Curled



Fully Independent Mantis Thumbs
Allows Clamping of Uneven Loads

Weld-on Replaceable Grizzly Cutters

Severe-Duty Buckets Available in 42 , 48 , 54
and 60 Widths With **Mantis Thumbs**

Disclaimer: The Technical Information Provided in this Brochure Shall Remain The
Exclusive Intellectual Property of TAG Manufacturing, Inc., Chattanooga, TN 3 16

Superior Performance and Durability

TAG Manufacturing, Inc. • Chattanooga, TN





Specialty Buckets And Attachments



Duck-Bill Teeth Buckets

Additional Duck-Bill / Flared Teeth

for Straight Edge Digging Applications
Compact Excavators RTL Backhoes Large Excavators
Pin-on CWP Deere-Hitachi Wedge-Lock QC
QC27/30/33 Compact Quick-Couplers



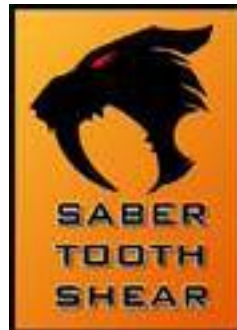
Severe Duty Rock-Ripping Buckets

Excavators 40,000 lbs. to 120,000 lbs.
All Ripping Shanks are Fabricated from
A514 T-1 Alloy Steel and are Designed
to Work in the Most Severe-Duty Applications
Optional G.E.T. with Single, or Twin Tiger Teeth



Heavy Duty Skeleton Buckets

Compact Excavators RTL Backhoes
Excavators 14,000 lbs. to 120,000 lbs.
Optional Tine Spacing and Tine Thickness



Saber Tooth Stump Shear

Excavators 33,000 lbs. to 120,000 lbs.
Designed To Shear Stumps and Roots With Less Soil Disturbed
Fabricated From High-Strength Abrasion Resistant Steel Alloys
For Maximum Strength and Service Life

Superior Performance and Durability

TAG Manufacturing, Inc. • Chattanooga, TN





Specialty Buckets And Attachments



Integral Pin Low-Profile Heavy-Duty Quick-Coupler Buckets

Excavators 24,000 lbs. to 60,000 lbs.

Optimum Tip Radius For Use With Pin-Grabber Quick-Couplers Maximizes Digging Forces



Severe-Duty Spade-Nose Rock Buckets

Excavators 40,000 lbs. to 120,000 lbs.

A514 T-1 Alloy Steel In Key Areas are Designed to Work in the Most Severe-Duty Applications
Optional G.E.T. with Single, or Twin Tiger Teeth



Pin-on Style

C Style

Universal Top Mounting Brackets

Excavators 1,500 lbs. to 160,000 lbs. RTL Backhoes
Pin-on QC27 QC30 QC33/35 QC38/40 Quick-Coupler

Optional Machining and Hole Locations for Various Applications and Hydraulic Hammer Manufactures

Superior Performance and Durability

TAG Manufacturing, Inc. • Chattanooga, TN





Specialty Buckets And Attachments



Super-Wide Heavy Duty Ditching Buckets

Compact Excavators RTL Backhoes
Large Excavators with Standard and Long Fronts
Pin-on C2 30 33 Compact uick-Couplers
Exclusive **Double-Bottom Design** on RTLs
and 1 ,000 lbs. to 120,000 lbs. Excavators
Optional H. D. Reversible Bolt-on Cutting Edge

Aquatic Ditching Buckets

Compact Excavators RTL Backhoes
Large Excavators with Standard and Long Fronts



Volvo® S1, S2, S3, and S6 SQF Buckets

Large Excavators Wheeled Excavators
Full Range of Optional G.E.T. and Sidecutters
Standard and Hi-Capacity Available In
Heavy-Duty and Severe-Duty Configurations

Superior Performance and Durability

TAG Manufacturing, Inc. • Chattanooga, TN





Specialty Buckets And Attachments



Trapezoidal Ditching Buckets

Compact Excavators RTL Backhoes
Large Excavators with Standard and Long Fronts



Optional
Hole Packages Available

Heavy Duty Ditching Buckets

Compact Excavators RTL Backhoes
Large Excavators with Standard and Long Fronts
Pin-on CWP Deere-Hitachi Wedge-Lock C
C2 30 33 Compact Quick-Couplers

Exclusive **Double-Bottom Design** on RTLs
and 10,000 lbs. to 120,000 lbs. Excavators
Optional H. D. Reversible Bolt-on Cutting Edge



Heavy Duty Tilting Ditching Buckets

Excavators 10,000 lbs. - 60,000 lbs.
Mini Excavators RTL Backhoes
5° Tilting Right - Left 90 Degrees Total Oscillation
Adjustable Flow-Control Valves with Central Check-Valve
H. D. Reversible Bolt-on Cutting Edge



Skeleton Ditching Buckets

Compact Excavators RTL Backhoes
Large Excavators with Standard Long Fronts
Standard 2 Tine Spacing Optional Tine Spacing
Optional H. D. Reversible Bolt-on Cutting Edge

Superior Performance and Durability

TAG Manufacturing, Inc. • Chattanooga, TN





Specialty Buckets And Attachments



Heavy Duty " Loader-Style " Excavator Rakes

Excavators 12,000 lbs. to 120,000 lbs.
All Rakes are Fabricated from A514 T-1 Alloy Steel and are Designed to Work in Heavy-Duty Applications



Heavy Duty Excavator Grapple Rakes

Excavators 24,000 lbs. to 120,000 lbs.
All Rakes are Fabricated from A514 T-1 Alloy Steel and are Designed to Work in Heavy-Duty Applications
Optional Tine Spacing to Mesh with Thumbs



Pavement Removal Tools

Compact Excavators RTL Backhoes
Excavators 12,000 lbs. to 120,000 lbs.
Replaceable Teeth Optional Widths and Openings Available



Compact Excavators & RTL Backhoes Grapple Rakes

Excavators 4,000 lbs. to 16,000 lbs.
Pin-on CWP Deere-Hitachi Wedge-Lock QC QC27/30/33 Quick-Couplers Available

Superior Performance and Durability



TAG Manufacturing, Inc. • Chattanooga, TN





Specialty Buckets And Attachments



Heavy-Duty Deere OEM Style Rear Backhoe Buckets

Available For Other Manufactures of
Rubber Tire Loader Backhoes



Heavy-Duty Case OEM Style Rear Backhoe Buckets

For Case Rubber Tire Loader Backhoes



Heavy-Duty " Ford Style " New Holland Buckets

For Rubber Tire Loader Backhoes



Severe Duty " V - Bottom " Buckets

Excavators 1,500 lbs. to 120,000 lbs. RTL Backhoes

Pin-on C2 30 33 Compact wick-Coupler
A514 T-1 Alloy Steel In Key Areas are Designed
to Work in the Most Severe-Duty Applications
Optional G.E.T. with Single, or Twin Tiger Teeth

Superior Performance and Durability

TAG Manufacturing, Inc. • Chattanooga, TN





Specialty Buckets And Attachments



Coral Rock Buckets

Excavators 1,500 lbs. to 160,000 lbs. RTL Backhoes
Severe-Duty H. D. Cutting Edges
Extra Reinforcements and Wear Strips Increased
Number of Teeth Designed to Peel Coral Rock

Large Excavator Custom Designs Available



Heavy Duty Single Shank Rippers

Excavators 1,500 lbs. to 160,000 lbs. RTL Backhoes
Pin-on CWP Deere-Hitachi Wedgelok Quick-Coupler
C2 30 33 Compact Quick-Coupler Kubota C
A51 T-1 Alloy Steel Shank Tooth Options Available



O.E.M. Style Quick-Coupler Buckets

Compact Excavators RTL Backhoes
CWP Deere-Hitachi Wedgelok Quick-Coupler
Kubota Quick-Coupler Available



Railroad Cribbing Buckets

Excavators 6,000 lbs. to 16,000 lbs. RTL Backhoes
Pin-on C30 Compact Quick-Coupler
3 Custom Profiles Available to Suit All Applications



Cemetery Bell-Hole Buckets

Compact Excavators RTL Backhoes
Pin-on CWP Deere-Hitachi Wedgelok Quick-Coupler
Kubota Quick-Coupler Available



Pipe Handling Buckets

Compact Excavators RTL Backhoes
Tapered V Sides Designed to Cradle Pipes
Great for Utility Contractors Working Without Thumbs

Superior Performance and Durability

TAG Manufacturing, Inc. • Chattanooga, TN





Deere-Hitachi Wedgelok Quick-Coupler Buckets & Main-Pin Hydraulic Thumbs

For Deere-Hitachi 17, 27/35, 50 & 60 Series CWP Excavators



Available in Excavation and Ditching Style Buckets

Thumb Group Part Numbers

17D / ZX17U - 213-0012A

27D / ZX27U - 213-0013A

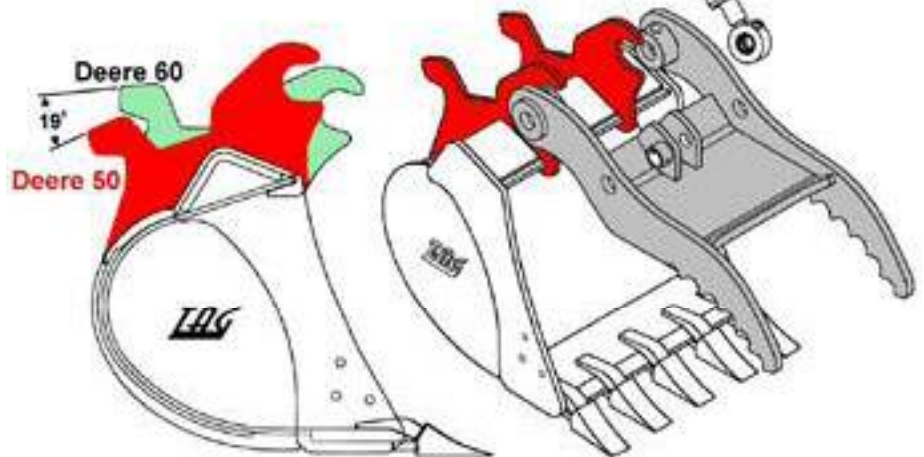
35D / ZX35U - 213-0014A

50D / ZX50U - 213-0015A

60D / ZX60U - 213-0021A

**Dedicated Main-Pin Hydraulic
Thumbs Adapts Directly to
Factory Cylinder Brackets
and Includes Hose Group**

**Machine Specific Bucket and
Thumb Groups Engineered To
Offer OEM Rotations and
Proper Operation of Each
Class of CWP Excavator**



Superior Performance and Durability



TAG Manufacturing, Inc. • Chattanooga, TN





Manual Quick Couplers and Quick-Coupler Buckets

Manual TAG Quick-Couplers and Quick-Buckets



Simple Turn-of-a-Bolt Adjustment

Cast High-Strength Alloy Center Increases Strength 50%

Adjust-A-Hook™ Quick-Coupler

US Patent No. 7,866,935
All Rights Reserved

Excavators Up to 33,000 lbs. and Rubber Tired Loader Backhoes

Offered In Our C2, C30, C33, 35 Series Couplers • 100% Compatible With All B2, B30, B33, 35 Buckets

• Exclusive Adjust-A-Hook™ Quick-Couplers Offers Quick and Easy Adjustments to the Wear Areas of the Coupler

- Both Our Standard Non-Adjustable Couplers and Our Adjust-A-Hook™ Couplers Offers a Strong Cost Effective Quick-Coupler and Quick-Bucket Attachment Combination
- One Pin Simple and Fast Hook-Up With Low Profile Optimizes Digging Forces
- TAG Has Improved Many Areas of the Coupler Strength and the Bucket Fit-Up to Offer Increased Durability with Less Maintenance

Standard Non-Adjustable Couplers

Excavators Up to 5,000 lbs. and Rubber Tire Loader Backhoes

Incorporates Robust Internal Ribbing for Maximum Hook Strength

C2, C30, C33, 35 Series Couplers
2,500 lbs. to 33,000 lbs.

C38, 40 Series Couplers
33,000 lbs. to 5,000 lbs.



Superior Performance and Durability



TAG Manufacturing, Inc. • Chattanooga, TN





Manual Quick Couplers and Quick-Coupler Buckets

Manual TAG Quick-Couplers and Quick-Buckets

Available for Excavators Up to 5,000 lbs. and for Rubber Tire Loader Backhoes

- Strong Cost Effective Quick-Coupler and Quick-Bucket Attachment Combination
- One Pin Simple and Fast Hook-Up With Low Profile Optimizes Digging Forces
- TAG Has Improved Many Areas of the Coupler Strength and the Bucket Fit-Up to Offer Increased Durability with Less Maintenance

Larger Tube Wall Thickness
Increases Strength 50%

Non-Adjustable or Adjust-A-Hook™

1.25" Pin Dia.

B26 B2 B28 B29

2,500 lbs. - 12,000 lbs. C2 Coupler and Bucket Group

Non-Adjustable or Adjust-A-Hook™

1.5" Pin Dia.

B31 B30WR B30 B32

12,000 lbs. - 16,000 lbs. C30 Coupler and Bucket Group

Non-Adjustable or Adjust-A-Hook™

2.50" Pin Dia.

B33WR B35

20,000 lbs. - 33,000 lbs. C33 35 Coupler and Bucket Group

Non-Adjustable

3.00" Pin Dia.

B38 B40

33,000 lbs. - 50,000 lbs. C38 40 Coupler and Bucket Group

Superior Performance and Durability

TAG Manufacturing, Inc. • Chattanooga, TN





"Get a Grip on Your Work"

We've Got the Right Thumb for Your Excavator
With Applications for All Manufacturers
2,500 lbs. to 100,000 lbs. Excavators

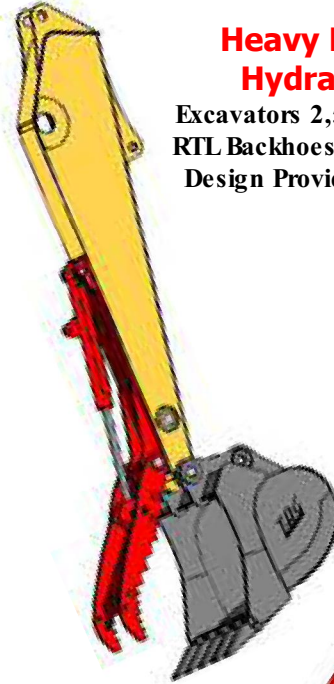
Heavy Duty Weld-on Thumbs

Excavators 12,000 lbs. to 100,000 lbs.
RTL Backhoes Innovative Link
Stays-In-the-Track
for Easy and Quick Positioning



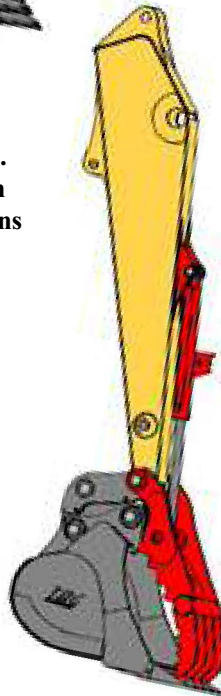
Heavy Duty Weld-on Hydraulic Thumbs

Excavators 2,500 lbs. to 80,000 lbs.
RTL Backhoes Narrower 2 Finger
Design Provides Positive Clamping

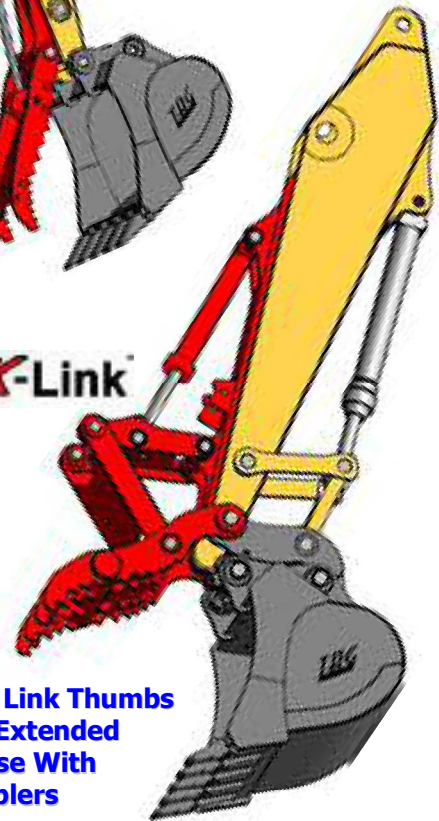


Compact Main-Pin Hydraulic Thumbs

Excavators 2,500 lbs. to 20,000 lbs.
RTL Backhoes Provides Maximum
Productivity and Range of Applications



Main Pin and Quick Link Thumbs
Available With Extended
Lengths for Use With
Quick-Couplers



Main-Pin Hydraulic Thumbs

Excavators 2,000 lbs. to 120,000 lbs.
Provides Maximum Productivity
and Range of Applications

Progressive-Link Hydraulic Thumbs

Excavators 2,000 lbs. to 120,000 lbs.
Up to 205° Rotation Robust Linkage
Innovative Design Delivers Quicker
and Simpler Installations

Superior Performance and Durability

TAG Manufacturing, Inc. • Chattanooga, TN





Track-N-LOCK™

Weld-on Manual Thumbs

Just Simply "Track the Link" to Re-Position the Thumb

16,000 lbs. to 70,000 lbs. Excavators and Rubber Tire Loader Backhoes

Heavy-Duty Extended Base-Plate Optimized for Stick Widths and with Pre-Cut Plug-Weld Holes

Enclosed Track Always Maintains the Link for Fast and Easy Repositioning

Three Thumb Positions

Top Pin Locks and Folds the Thumb Extremely Flat Against Dipperstick

Oversized Pin with Longer-Taper Offers Ease of Quick Re-Pinning During Repositioning

Heavy-Duty Solid Link and Tines are Fabricated from ASTM A514 T-1 High-Strength Steel

Larger Pin with HD Flange Retention and Expanded Bearing Area with Grease Fittings

Compact to Large Excavator Weld-on Thumbs 2,500 lbs. to 80,000 lbs.

**Weld-on Rigid Thumbs for Compact Excavators and Rubber Tire Loader Backhoes
2,500 lbs. to 16,000 lbs.**

**Weld-on Rigid Thumbs for Large Excavators
24,000 lbs. to 100,000 lbs.**



Three (3) Position Strong Triangulated "Rigid-Link" Resists Flexing



Superior Performance and Durability



TAG Manufacturing, Inc. • Chattanooga, TN





Heavy Duty Main-Pin Thumbs Maximize Your Versatility

Main-Pin Hydraulic Thumbs
24,000 lbs. to 100,000 lbs.

Hardened Main-Pin with "No Bolt Hole" Midway In the Pin That Eliminates a Potential Failure Point • Innovative "Flag" Retention System For Long Life

Replaceable "Top Hat" Bushings with Wider Bearing Surfaces and "Figure 8" Grooving Insures Optimum Grease Transfer With a Much Extended Service Cycle



Extended Length for Quick-Couplers

Outside Groove Assures Grease Transfer Should the Bushing "Turn"

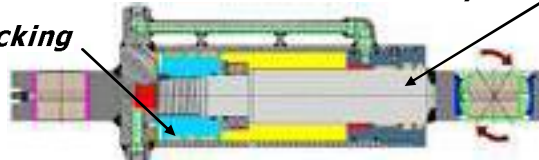


Main-Pin Thumb Rotation
Approx. 120° Rotation

Rear Ports Makes Hose Installations Simple

H.D. Poly-Packing

Large Diameter High-Strength N-45 Chrome Rods
Rod-End Self-Aligning Spherical Bearings



Robust Duty-Cycle Designed Main-Pin Thumbs Are Custom Mated to the Bucket Width and Teeth Layouts, Plus the Bucket Tip Radius for Standard and for Quick-Coupler Applications



All Hydraulic Thumbs Require Bi-directional Implement Circuit Relief Valves Set to a Maximum of 2,500 psi. for Proper Operation • TAG Thumbs are Designed to Work with TAG Buckets and TAG Grapple Rakes

Superior Performance and Durability

TAG Manufacturing, Inc. • Chattanooga, TN





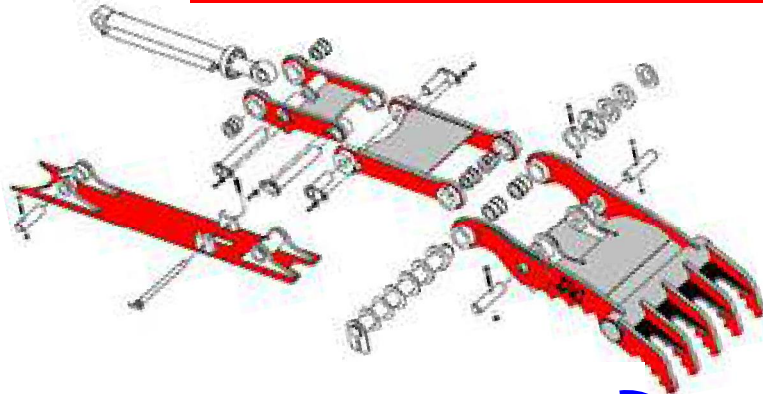
QUICK-Link™

Main-Pin Hydraulic Thumbs
With Unitized Links and Cylinder Assembly

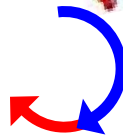
Progressive Link Main-Pin Hydraulic Thumbs 24,000 lbs. to 100,000 lbs.



Replaceable "Top Hat" Bushings
with "Figure 8" Grooving
Insures Optimum Grease Transfer
and Long Service Life



MAXIMUM RANGE OF ROTATION
FROM 165°, UP TO AN INDUSTRY
LEADING 205° OF ROTATION



Upgraded Features
of the Main-Pin
Quick-Link Heavy Duty
Hydraulic Cylinders

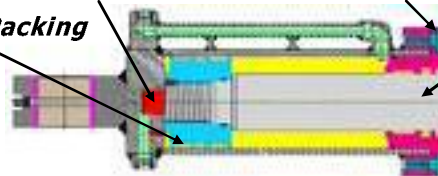
Internal Hydraulic Cushion
to Reduce "Bottoming-Out"

H.D. Poly-Packing

H.D. (8) Bolt
Cylinder Cap

Larger Diameter
High-Strength
N-45 Chrome Rods

Larger Rod-End
Self-Aligning
Spherical Bearings



- Self-Contained Design, Fully Assembled with Guide-Links and Cylinder that are "Unitized" on a Pre-Engineered Base Plate
- Integral Stop and Lock Standard, No Extra Welding
- Cuts Installation Time in Half, No Dis-assembling of Machine
- Maximum Arc of Rotation Offers an Increased Range of Motion to Work Where Other Thumbs Can't

TAG Quick-Link Thumbs
Are "Custom Fitted"
to the Bucket, and for
Working With
Quick-Couplers



All Hydraulic Thumbs Require Bi-directional Implement Circuit Relief Valves Set to a Maximum of 2,500 psi. for Proper Operation • TAG Thumbs are Designed to Work with TAG Buckets and TAG Grapple Rakes

Superior Performance and Durability



TAG Manufacturing, Inc. • Chattanooga, TN





Excavator Rakes Maximize the Versatility of Your Excavator

TAG Excavator Rakes Work Where Others Will Not

Designed To Allow You to Dig, Demolish and Load With Just One Attachment

Add a Thumb and It Becomes a Loading Grapple Attachment That Traditional 3-Over-Grapples Can't Offer This Range of Flexibility and Versatility

Install a Hydraulic Quick-Coupler, or Manual Quick-Coupler to Change-Out the Bucket for the Rake Fast and Simple or Direct Pin-on a Rake

Compact Excavators - RTLs Available as a Pin-on 2 30 33 Quick-Coupler CWP Deere-Hitachi Wedge-Lock C Kubota C



Install a Main-Pin Thumb, or QUICK-Link Thumb and Get Work-Ready For All Your Jobs



All Rakes are Built with A51 T-1 Alloy Steels and Are Designed to Work in Heavy-Duty Applications

Shown with a Dromone Hydraulic Pin-Grabber Quick-Coupler and Main-Pin Thumb

Shown with 27QC & Main-Pin Thumb

Simply The Greatest Range of Motion Available From Any Combination of Attachments TAG Grapple-Rakes Offers You a "Full Two-Sided" Hydraulic Grapple That Works Where Others Can't



All Hydraulic Thumbs Require Bi-directional Implement Circuit Relief Valves Set to a Maximum of 2,500 psi. for Proper Operation • TAG Thumbs are Designed to Work with TAG Buckets and TAG Grapple Rakes

Superior Performance and Durability

TAG Manufacturing, Inc. • Chattanooga, TN





Heavy-Duty Main-Pin Manual Thumbs

Increased Production and Ease of Positioning the Thumb With a



Design 3 Position Weld-on Bracket

Replaceable "Top Hat" Bushings with Wider Bearing Surfaces and "Figure 8" Grooving Insures Optimum Grease Transfer With a Much Extended Service



This Exclusive Design Allows The Manual Main-Pin Thumb To Maintain The Same Arc of Rotation As a Bucket, Or an Excavator Rake

Simply Always In Contact

Never Too Long, or Too Short As a Standard Weld-on Rigid Thumb

Add a TAG Excavator Rake That's Capable of Digging, Demolishing and Loading Materials as a Grapple

Or Use With a TAG Excavator Bucket For The "Ultimate Combo"



The Thumb Does Not Need To Be Repositioned From The Working Position When Hauling



Massive Solid Rigid "Stiff Leg"

Superior Performance and Durability

TAG Manufacturing, Inc. • Chattanooga, TN





Heavy Duty Thumbs Maximize Your Versatility

Compact to Large Excavator Weld-on Hydraulic Thumbs 2,500 lbs. to 80,000 lbs.

Also Available for Rubber
Tire Loader Backhoes

Standard Narrow Two
Finger Design Offers an
Economical Option for a
Hydraulic Thumb with
Excellent Clamping
Forces and Rigidity
For Long Service Life



Weld-on Hydraulic Thumb Rotation
Approx. 120° Rotation

Not Recommended
For Use With
Quick-Couplers
Extended Thumb
May Interfere With
the Boom

Optional (4) Finger
Designs for
Class 150-250
Excavators



Compact Excavator Main-Pin Hydraulic Thumbs

2,000 lbs. to 20,000 lbs.

Many Applications Are a Direct Fit and Work With Factory Brackets and Auxiliary Lines

Greaseable
Pivots Points



Broad Two Finger Design Offers
Excellent Clamping Forces and
Rigidity For Long Service Life



Thumb Bodies Are Extended
for Quick-Couplers



All Hydraulic Thumbs Require Bi-directional Implement Circuit Relief Valves Set to a Maximum of 2,500 psi. for Proper Operation • TAG Thumbs are Designed to Work with TAG Buckets and TAG Grapple Rakes

Superior Performance and Durability

TAG Manufacturing, Inc. • Chattanooga, TN





Manual Pin-Grabber Quick Couplers

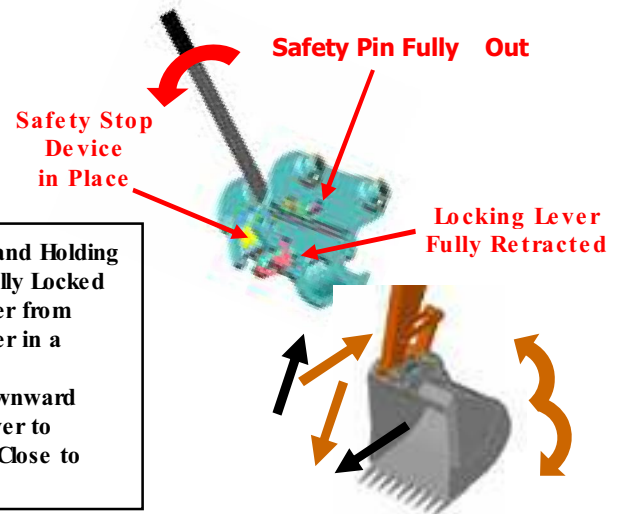
Compact Manual Spring-Latch Pin-Grabber Quick-Coupler



- Compact and Sturdy Spring-Latch Pin-Grabber Coupler
- Offers Broad Versatility to Make the Most of All Standard Attachments with a Simple and Quick Change-Out
- Automatic Redundant Locking Pin
- Low Profile Optimizes Digging Forces

Unlock Procedure Insert the Hand-Lever into the Locking Mechanism, and Holding the Safety Pin in a Full-Out Position, bring the Hand-Lever Down to the Fully Locked Position which will Retract the Locking Lever and prevent the Locking Lever from Re-Closing while removing the attachment. Then Simply Rotate the Coupler in a Counter-Clockwise and Outward Motion to Disengage the Pins.

Re-engagement Procedure Rotate the Coupler in a Clockwise and Downward Motion to Engage the Pins. The Safety Device will Release the Locking Lever to **Automatically Clamp-Shut** on the Rear Pin, and the Safety Pin will Close to Offer a Redundant Locking Device.



Manual Screw Pin-Grabber Quick-Coupler

- Strong, Uncomplicated Slide Pin-Grabber Coupler
- Robust Straight Tread Mechanical Screw Moves Locking Jaw to Un-Lock and Lock Attachments quickly
- Double Redundant Screw Lock and Safety Pin
- Low Profile Optimizes Digging Forces

Available for Excavators from
2,000 lbs. to 10,000 lbs.



Un-Locking Locking Procedure Easy Straight Forward Mechanical Screw Moves Locking-Jaw to Un-Lock and Lock the Attachment, and with the Double Redundancy of a Screw Lock and an Added Safety Pin to Safely Secure the Attachment. Coupler is Rotated Out and In of the Attachment Same as Other Couplers to Dis-engage, or Re-engage Attachments



Read, understand and follow all Safety Precautions found in the Machine's Operator's Manual before attempting any Operation of the Machine, or any Attachments. This documentation is intended for comparison purposes only and does not replace or supersede the operation manual for the machine, or the quick-coupler.

Always Visually Inspect and Check to Make Sure the Safety Pin, or Prop-Lock is FULLY CLOSED and LOCKED before operating the machine



Superior Performance and Durability



TAG Manufacturing, Inc. • Chattanooga, TN





Hydraulic Pin-Grabber Quick Couplers

Hydraulic Auto Lock Pin-Grabber Quick-Coupler



- Hydraulic Quick Coupler Offers the Flexibility to Quickly Change to Any Pin-on Attachment
- Attachments are Safely Released and Secured from Inside the Cab
- Auto Lock Quick-Coupler has a Redundant Hydraulic Check-Valve on the Internal Actuating and Locking Cylinder that Increases the Assurance of Securing Attachment, plus an Exclusive Prop-Lock Safety Latch Visible From Cab for Even Greater Safety that Offers an Additional Double Redundancy Locking Device with a Much Better Reassurance of Securing the Attachment
- Low Profile Optimizes Digging Forces

CAD Cut-a-Way Auto Prop-Lock Mechanism



In-Cab Visual Prop-Lock

Load Check Valve



In-Cab Controls



Un-Locking Locking Procedure All Controls are Cab-Mounted. Simple Procedures to Unlock the Safety Prop-Lock and Locking-Lever to Disengage the Attachment.. The Coupler is Rotated Out and In of the Attachment to Dis-engage, or Re-engage Attachments. Locking the Attachment is a Reverse Procedure and with the Double Redundancy of the Visual Prop-Lock and a Hydraulic Cylinder Load Check Valve Securing the Attachment



Read, understand and follow all Safety Precautions found in the Machine's Operator's Manual before attempting any Operation of the Machine, or any Attachments. This documentation is intended for comparison purposes only and does not replace or supersedes the operation manual for the machine, or the quick-coupler.

Always Visually Inspect and Check to Make Sure the Safety Pin, or Prop-Lock is FULLY CLOSED and LOCKED before operating the machine



Superior Performance and Durability



TAG Manufacturing, Inc. • Chattanooga, TN





Hydraulic Tilting Pin-Grabber Quick Couplers

Tilting Auto Lock Pin-Grabber Quick-Coupler



- Lighter Than Other Tilting Attachments, Offers Increased Bucket Capacities
- 80° Total Tilt with Less Complex Hydraulic Cylinders
- Hydraulic Quick Coupler Offers the Flexibility to Quickly Change to Any Pin-on Attachment
- Attachments are Safely Released and Secured from Inside the Cab
- Auto Lock Quick-Coupler has a Redundant Hydraulic Check-Valve on the Internal Actuating and Locking Cylinder that Increases the Assurance of Securing Attachment, plus an Exclusive Prop-Lock Safety Latch Visible From Cab for Even Greater Safety that Offers an Additional Double Redundancy Locking Device with a Much Better Reassurance of Securing the Attachment
- Low Profile Optimizes Digging Forces

CAD Cut-a-Way Auto Prop-Lock Mechanism



In-Cab Visual Prop-Lock

Load Check Valve



In-Cab Controls



Un-Locking Locking Procedure All Controls are Cab-Mounted. Simple Procedures to Unlock the Safety Prop-Lock and Locking-Lever to Disengage the Attachment.. The Coupler is Rotated Out and In of the Attachment to Dis-engage, or Re-engage Attachments. Locking the Attachment is a Reverse Procedure and with the Double Redundancy of the Visual Prop-Lock and a Hydraulic Cylinder Load Check Valve Securing the Attachment



Read, understand and follow all Safety Precautions found in the Machine's Operator's Manual before attempting any Operation of the Machine, or any Attachments. This documentation is intended for comparison purposes only and does not replace or supersede the operation manual for the machine, or the quick-coupler.

Always Visually Inspect and Check to Make Sure the Safety Pin, or Prop-Lock is FULLY CLOSED and LOCKED before operating the machine



Superior Performance and Durability



TAG Manufacturing, Inc. • Chattanooga, TN





Heavy Duty Wheel Loader Hydraulic Quick-Couplers Expands Your Versatility

**Full Range of Applications for Rubber Tire Loader Backhoes, Compact, Medium and Large Wheel Loaders
9,500 lbs. to 100,000 lbs.**

Available QC Hook-Ups

- JRB® " E " Series
- JRB® 580 Series (Case)
- JRB® 84 Series
- JRB® 416 Series
- JRB® 418 Series
- JRB® 420 Series
- JRB® 422 Series
- CAT® IT12-IT28
- CAT® IT38
- Balderson Series
- Volvo® L25-L30
- Volvo® L35-L45

- | | |
|---|--------------------------------|
| <ul style="list-style-type: none"> • Volvo® ISO L50-L120 • John Deere™ " Hi-Vis " | <p>Same Attachment Pick-Up</p> |
|---|--------------------------------|

- Volvo® L150-L220
- John Deere™ " Work-Pro "
- Komatsu® " WB Series "
- Komatsu® Compact QC
- ACS® 1000 – Pro 2000
- Hyundai® Series



Includes Machine Specific O.E.M. Interface Hydraulic

" Combo " Applications Available to Have The Base Machine " Pick-Up " Another Manufacture's Attachments

Available Machines

- | |
|---|
| <ul style="list-style-type: none"> • Case • Caterpillar • Doosan • Hyundai • JCB • John Deere • Kawasaki • Komatsu • New Holland • Terex • Volvo • and Other Manufactures |
|---|



Manual Quick-Couplers Available For Limited Applications

Superior Performance and Durability

TAG Manufacturing, Inc. • Chattanooga, TN





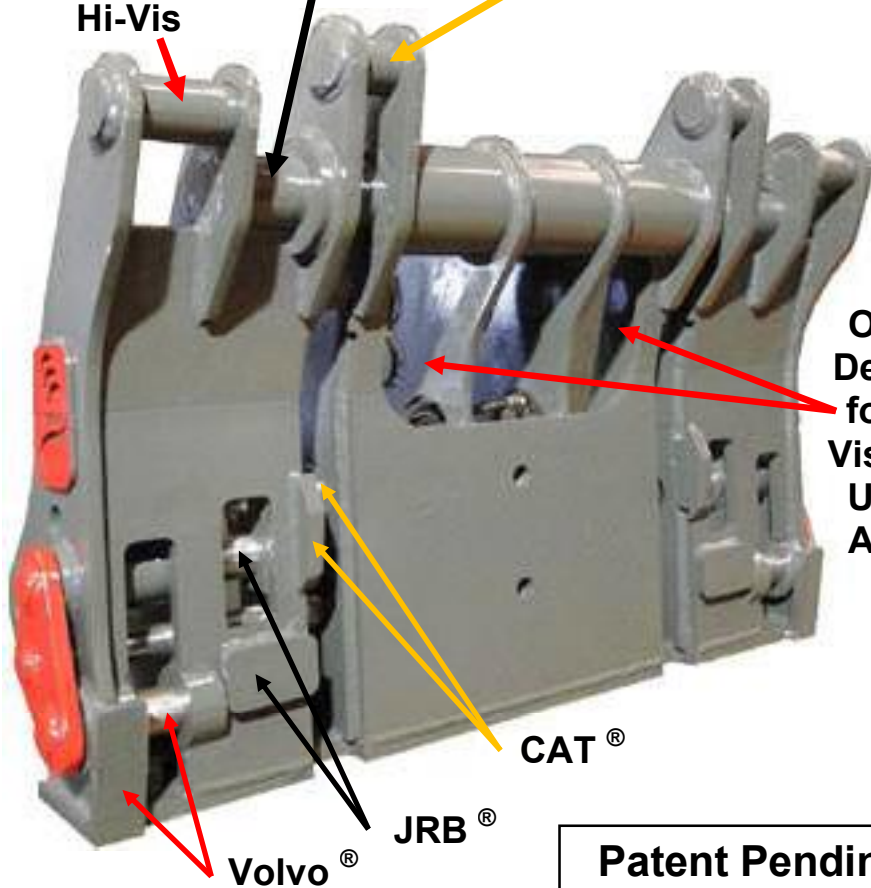
Turn Your Wheel Loader Into a Three-Headed Monster With Our New and Innovative Coupling System

TAG's New HYDRA Multi-Coupler™ will give any Class 200 to 500 Wheel Loader the Capability to Attach to the Three Main Coupler Systems in the Market Today With Just One Hydraulic Coupler

Volvo® ISO
L50 – L120
John Deere®
Hi-Vis

JRB®
416 Series

CAT®
IT12 – IT28



Open Center Design Allows for Improved Visibility When Used in Fork Applications



Patent Pending

Disclaimer: The Technical Information Provided in this Brochure Shall Remain The Exclusive Intellectual Property of TAG Manufacturing, Inc., Chattanooga, TN 3 16

Superior Performance and Durability

TAG Manufacturing, Inc. • Chattanooga, TN





Wheel Loader Attachments With Heavy Duty Versatility

XTENDEDTM PERFORMANCE

Material Re-Handling **X**TENDEDTM Performance Buckets

Pin-on • Quick-Coupler, O.E.M Cutting Edges
Special Design With a Deeper Longer Floor
and Greater Side Plate Attack Angles
To Enhance Material Penetration and Loading
And the Addition of Arched Outward Sides
Increases the Material Retention at
MA Roll-Back In Load-N-Carry Applications



- Optional 2 Bolt Cast Alloy Corner Wear Guards with TAG CNC Machined ASTM A514 T-1 Weld-in Inserts
- Most All O.E.M Quick-Coupler Hook-ups Available

Disclaimer: The Technical Information Provided in this Brochure Shall Remain The Exclusive Intellectual Property of TAG Manufacturing, Inc., Chattanooga, TN 3 16

Optimized Bucket Sides and Profiles For Maximum Material Retention In Load-N-Carry Applications

1 3 Lower Coverage
Outside and Inside Wear
Plates For Increased
Service Life

Increased Widths to Lower
Bucket Height For Improved
Visibility



Mega High Capacity Light-Weight Materials and Coal Re-Handling Buckets
Fabricated From Special High Strength Alloy Steels To Reduce
Total Bucket Weight With Larger Mega Capacities
Drilled for O.E.M Cutting Edges

Superior Performance and Durability

TAG Manufacturing, Inc. • Chattanooga, TN





Wheel Loader Attachments With Heavy Duty Versatility



General Purpose Buckets

Standard and Larger Capacities Available

Pin-on • Quick-Coupler, O.E.M. Cutting Edges

- Most All O.E.M. Quick-Coupler "Hook-ups" Available



Light Material Large Capacity Buckets

Pin-on • Quick-Coupler, O.E.M. Cutting Edges

Optional Solid, or Wire Mesh Opening Spill Plate

- Most All O.E.M. Quick-Coupler "Hook-ups" Available



General Purpose Buckets with Bolt-on Teeth

Standard and Larger Capacities Available

Various GET Systems Available • Bolt-on Segments

Pin-on • Quick-Coupler, O.E.M. Cutting Edges

- Most All O.E.M. Quick-Coupler "Hook-ups" Available



Wood-Chip Large Capacity Buckets

Pin-on • Quick-Coupler, O.E.M. Cutting Edges

Optional Solid, or Wire Mesh Opening Spill Plate

- Most All O.E.M. Quick-Coupler "Hook-ups" Available

Superior Performance and Durability

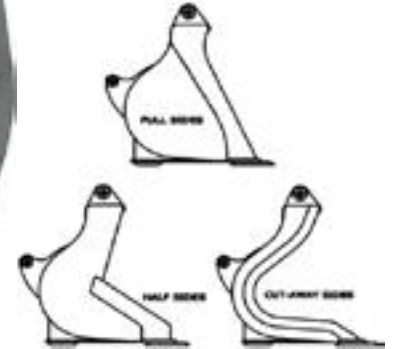


TAG Manufacturing, Inc. • Chattanooga, TN





Wheel Loader Attachments With Heavy Duty Versatility



Heavy-Duty Recycling / Waste Transfer Station Grapple Buckets
Duty-Cycle Heavy-Duty Robust " Ladder-Style " Clamps With Larger Hinge Pins and Clamp Stops
 Pin-on • Quick-Coupler, Drilled O.E.M. Cutting Edges • Full, Half, or Cut-a-Way Sides
 Requires 3rd Function Hydraulics
 Most All O.E.M. Quick-Coupler Hook-ups Available

**H.D. Integrated
Spill Plate**



Pushing Profile



**Optional Solid, or Laminated
Rubber Edges & Rear Wear Pads**

Waste Transfer Station Large Capacity Buckets
Optional Loading, or Pushing Configuration
 Pin-on • Quick-Coupler, Drilled for O.E.M. Cutting Edges
 or Optional Rubber Edges and Rear Wear Pads
 Most All O.E.M. Quick-Coupler Hook-ups Available

Superior Performance and Durability

TAG Manufacturing, Inc. • Chattanooga, TN





Wheel Loader Attachments With Heavy Duty Versatility



Available for
Compact Wheel Loaders
• RTL Backhoes

Grapple Buckets with 2 Independent Top Clamps

Pin-on • Quick-Coupler, O.E.M. Cutting Edges

Full, Half, or Cut-a-Way Sides • Optional Special Clamp Designs,
Optional Enclosed Clamps with Solid Plating, or Expanded-Metal

Requires 3rd Function Hydraulics • Most All O.E.M. Quick-Coupler "Hook-ups" Available

NOTE Primary Application Designed For General-Duty Debris Clean-Up and Light-Weight Loose Materials
For Continuous Duty-Cycle Applications Please Refer To Our Heavy-Duty Recycling Grapple Buckets

Superior Performance and Durability

TAG Manufacturing, Inc. • Chattanooga, TN





Wheel Loader Attachments With Heavy Duty Versatility



Straighter
15°-18°
Sides



Heavy-Duty Multi-Purpose 4 in 1 Buckets

Pin-on • Quick-Coupler, O.E.M. Cutting Edges
and Various G.E.T. Tooth Systems Available
Requires 3rd Function Hydraulics
Most All O.E.M. Quick-Coupler " Hook-ups " Available

Special Low-Profile High Capacity Fertilizer / Agriculture Buckets

Pin-on • Quick-Coupler, O.E.M. Cutting Edges
Designed for Maximum Retention of Agriculture Products
and Materials Where Minimum Hopper Width
and Door Openings Are Encountered
Most All O.E.M. Quick-Coupler " Hook-ups " Available



ACS® Series 1000 and Pro Series 2000 Quick-Coupler Buckets And Attachments

Direct Compatibility With Existing ACS® Coupler Systems
Plus a Full Complement of All Wheel Loader Attachments Including Buckets, Forks & Booms

Superior Performance and Durability

TAG Manufacturing, Inc. • Chattanooga, TN



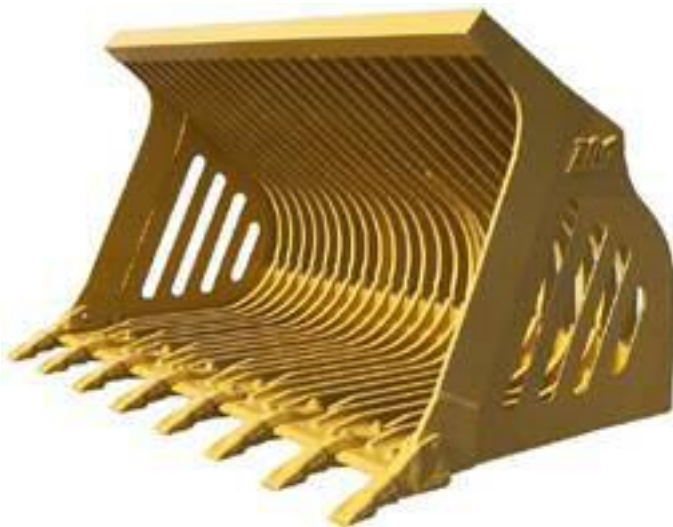


Wheel Loader Attachments With Heavy Duty Versatility



Heavy-Duty Straight-Lip Rock Buckets, or Spade-Nose Rock Buckets

Various G.E.T. Tooth Systems Available with Weld-on Shanks and Teeth • Option Bolt-on, or Weld-on Segments, or O.E.M Bolt-on Cutting Edges and H.D. Rear Wear Plates



Heavy-Duty Skeleton Buckets

Pin-on • Quick-Coupler

Optional Tine Spacing and Tine Thickness

• Most All O.E.M. Quick-Coupler "Hook-ups" Available

Crawler Loader G.P. Buckets

Pin-on • Quick-Coupler, O.E.M. Cutting Edges

Bolt-on Shanks • Bolt-on Segments • Bolt-on Edges

• Most All O.E.M. Quick-Coupler "Hook-ups" Available

Superior Performance and Durability

TAG Manufacturing, Inc. • Chattanooga, TN





Wheel Loader Attachments With Heavy Duty Versatility



Bark, or Mulch Large Capacity Light-Weight Buckets

Pin-on • Quick-Coupler

Drilled for O.E.M. Cutting Edges

Most All O.E.M. Quick-Coupler Hook-ups Available



16.00 yd3 to 25.00 yd3 Capacities

Mega High Capacity Ultra Light-Weight Wood Chip Buckets

Fabricated From Special High Strength Alloy Steels To
Reduce Total Bucket Weight With Larger Mega Capacities

Pin-on • Quick-Coupler, Drilled for O.E.M. Cutting Edges

Most All O.E.M. Quick-Coupler Hook-ups Available

Available for Compact Wheel Loaders • RTL Backhoes



Side Dump Buckets

LH Dumping, or RH Dumping • Pin-on • Quick-Coupler, Drilled for O.E.M. Cutting Edges

Requires 3rd Function Hydraulics Most All O.E.M. Quick-Coupler Hook-ups Available

Superior Performance and Durability

TAG Manufacturing, Inc. • Chattanooga, TN





Wheel Loader Heavy Duty High Tip Roll-Out Buckets

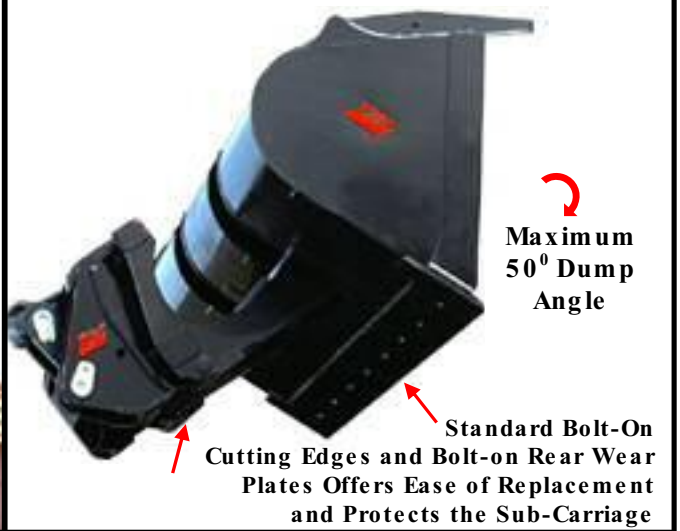
Low Bucket Volume Reductions With Industry Leading Smaller Roll-Out Cylinder Housings



Open Cylinder Housings and Sub-Carriage Reduces Material Build-Up



Wide Based Sub-Carriage Resists Twisting and Flexing at Maximum Heights



Industry Leading Features of TAG High Tip Roll-Out Buckets with

- **Maximum Outboard Spread of Twin-Cylinders** for Fast and Reliable Dumping of the Bucket, Resists Twisting and Flexing of the Carriage and the Bucket for Trouble Free Service
- **Full Mechanical-Stops** to Ensure Greater Reliability, Not Relying Upon the Cylinders to Stop-the-Bucket
- **OEM Drill Pattern Bolt-on Cutting Edges and Rear Wear Plates**, Yet Another Advantage, It lets us source directly from your Parts Department to Further Enhance the Up-Time of TAG Buckets, and **not waiting on Custom Edges**
- Available in **Standard Capacities**, or in **Large Light-Weight Material** Capacities

Superior Performance and Durability

TAG Manufacturing, Inc. • Chattanooga, TN





Super Extreme Duty Mining Buckets for Large Wheel Loaders

Available For Large Wheel Loaders With Custom GET Options and Full Mining Packages



Series

Increased Thickness Side-Plates for Added Strength And Reliability
Extra Thick Outer Wear-Plates for Higher Impact Resistance and Greater Wear Material

Weld-In Heavy-Duty Bucket Liners Adds Impact Strength and More Wear Material

Top Bottom Vertical Pin-on Shrouds for Added Protection

Exclusive Weld-in Liner Kicker for Added Protection

Oversized Bolt-on Segments and Top Wear-Plates Offers Improved Base-Edge Protection and More Wear Material

Heavy-Duty Larger Shouldered Shanks and Rock Penetration Teeth Offers Greater Reliability and More Wear Material

Maximize Your Mining Production with our S D Series Super Extreme Duty Large Wheel Loader Spade-Nose Mining Buckets

Superior Performance and Durability

TAG Manufacturing, Inc. • Chattanooga, TN





Wheel Loader Attachments With Heavy Duty Versatility



Severe-Duty Hot Slag Straight-Lip, or Spade-Nose Hot Slag Buckets

Designed For Removing Hot Slag From the Base of the Furnace, and for Stockpiling Molten or Cooled Slag

Extra-Thick Construction of Special Alloy Steels to Resist Intense Heat and Cracking

Sloped Bottom Design To Help the " Boil of Material " For Ease of Clean Out of the Bucket

Various G.E.T. Tooth Systems Available with Weld-on Shanks and Teeth

Option Bolt-on, or Weld-on Segments, and H.D. Rear Wear Plates



Heavy-Duty Smelter Charge-Chute Buckets

Designed To Load Ferrous Scrap, and Non-Ferrous Scrap, Plus Chemical Additives Into Smelters

Extra-Thick Construction of Special Alloy Steels to Resist Intense Heat and Cracking

Pin-on • Quick-Coupler • Most All O.E.M. Quick-Coupler " Hook-ups " Available

Superior Performance and Durability

TAG Manufacturing, Inc. • Chattanooga, TN





Wheel Loader Attachments With Heavy Duty Versatility

Shown with Optional
24 ISO Rack Guard

Available for Compact
WL • RTL Backhoes



Heavy-Duty Carbody Forks, Pin-on • Quick-Coupler
Various Carriage Widths and Fork Lengths Available
Optional Top, or Standard Bottom Tapered Forks
and Special Fork Spacing Available
• Most All O.E.M. Quick-Coupler "Hook-ups" Available

Heavy-Duty Construction Forks, Pin-on • Quick-Coupler
Various Carriage Widths • Tine Lengths Available
• Most All O.E.M. Quick-Coupler "Hook-ups" Available

" Pipeline Skidder-Tire Specials "

Available With Wider Carriages for Construction and Logging

Available for Compact
WL • RTL Backhoes



Hydraulic Side-Shift Forks, Pin-on • Quick-Coupler
Requires 3rd Function Hydraulics • H.D. Double-Acting
Cylinders • Flow-Control Valves and Piping
• Most All O.E.M. Quick-Coupler "Hook-ups" Available

Heavy-Duty Logging Forks, Pin-on • Quick-Coupler
Heaver Carriages and Reinforcements for Demanding
Applications • Available with "Independent Oscillating Tines"
• Most All O.E.M. Quick-Coupler "Hook-ups" Available

Superior Performance and Durability



TAG Manufacturing, Inc. • Chattanooga, TN





Wheel Loader Attachments With Heavy Duty Versatility



Class 2 Rated 6,000 lbs.



Class 3 Rated 10,500 lbs.
Class Rated 1,000 lbs.



Severe-Duty Quarry Forks
Designed For Large Wheel Loaders to
Pry and Chisel Out Cut, or Blasted Dimensional Stone
And Loading and Unloading of Trailers

Medium Duty Pallet Style Forks

Excellent Direct Replacement
For Many OEM Pallet Forks

Pin-on • Quick-Coupler, "Notched" Top Carriage
Designed as an Economical Option for Compact to
Medium Sized Wheel Loaders, and for RTL Backhoes

- Most All O.E.M. Quick-Coupler "Hook-ups" Available



Weld-on Quick-Attach Bucket Forks

5000 lbs. to 20,000 lbs. Ratings

Designed as an Economical Option For Wheel Loaders
and Rubber Tire Loader Backhoes



**Dedicated Swing-Over
Rubber Tire Loader Bucket Forks**
Rear Lockable in Storage Mode
For G.P. and Multipurpose -N-1 Buckets
• Designed for TAG Buckets Only

Superior Performance and Durability



TAG Manufacturing, Inc. • Chattanooga, TN





Wheel Loader Attachments With Heavy Duty Versatility



**Heavy-Duty Mill Yard Forks
Industry Leading Exclusive With
Solid Vertical Tine and Hinge Weldments**

3 Large Solid Monolithic ASTM A514 " T-1 " Full Height Weldments Offers Much Greater Strength and Rigidity With Less Mating Joints Pieces Than Competitive Designs

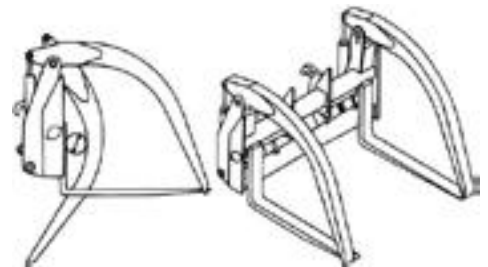
**Massive Horizontal and Vertical Cross Sections
Extra Internal and External Reinforcements in Key Areas To Offer Increased Structural Integrity for Larger Loads and the Demands of the Machine Ride-Controls on the Fork Attachment**

Regulating " Hydraulic Cross-Over Relief Valve " Offers Full Adjustability to Protect the Hydraulic Cylinders From " Pressure Spikes " That Yields Superior Reliability

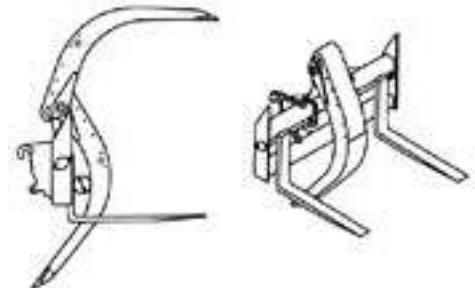
Full Width Top Clamp • Requires 3rd Function Hydraulics Pin-on, or Quick-Coupler

• Most All O.E.M Quick-Coupler " Hook-ups Available

IMPROVED NEW DESIGN



Available Double Top Clamps



Available Single Top Clamp

Heavy-Duty Log and Lumber Forks

Full Width Paddle Top Clamp • Requires 3rd Function Hydraulics

Pin-on, or Quick-Coupler • Optional Oscillating Forks

Optional Wide, or Narrow Width Hanger Rods

Optional Carriage Widths, and Fork Lengths Upon Request

• Most All O.E.M Quick-Coupler " Hook-ups Available

Superior Performance and Durability

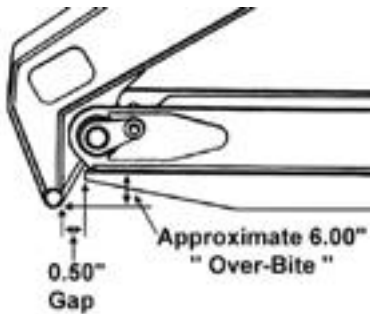
TAG Manufacturing, Inc. • Chattanooga, TN





Wheel Loader Attachments With Heavy Duty Versatility

Over-Bite
Option Available



Heavy-Duty Oil and Gas Drilling, Pipeline and Utilities Construction Pipe Forks

- Full Width Top Clamp with Stabilizer Clamps for Securely Handling Very Long Single Pieces, or Multiple Pieces of the Same Diameter Pipe
- The Double Hinge Top Clamp Folds to Hold More Pipe, Creating a Larger Payload
- Requires Only 3rd Function Hydraulics To Operate
- The Clamping Force is Engineered to Secure the Load Without Damaging the Pipe
- Wide Carriages With Shaft Mounted Non-Swinging Tines For Stability
- Extra Internal Reinforcements in Key Areas To Offer Increased Structural Integrity for Larger Loads and the Demands of the Machine Ride-Controls on the Fork Attachment
- Optional Carriage Widths, and Fork Lengths Upon Request
- Pin-on, or Quick-Coupler, Most All O.E.M. Quick-Coupler Hook-ups Available

Load Rated Forged Hooks



Heavy-Duty Manual Extendable Booms

Pin-on • Quick-Coupler

1, 2, or 3 Stages As Class Ratings Require
Most All O.E.M. Quick-Coupler Hook-ups Available

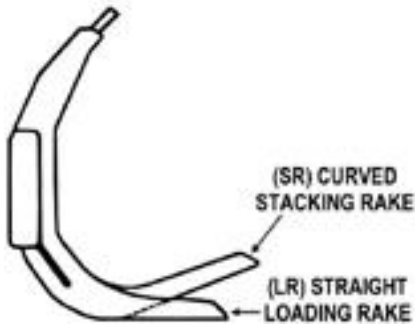
Superior Performance and Durability

TAG Manufacturing, Inc. • Chattanooga, TN





Wheel Loader Attachments With Heavy Duty Versatility



Heavy-Duty Rakes, Standard, and Stacking Designs

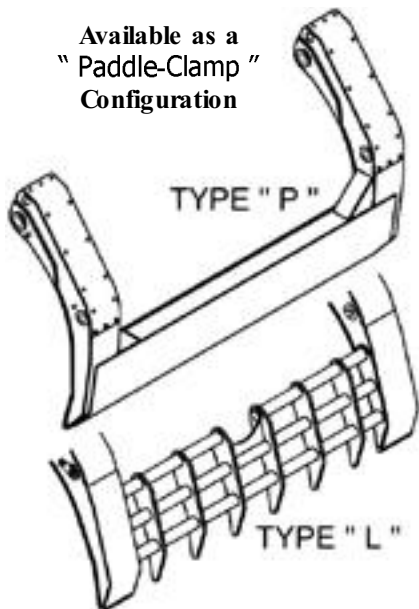
- Pin-on • Quick-Coupler • ASTM A51 T-1 Construction
- Most All O.E.M. Quick-Coupler "Hook-ups" Available

" Pipeline Skidder-Tire Specials "

Available With Wider Carriages for Construction and Logging

Available for Compact Wheel Loaders • RTL Backhoes

Available as a
" Paddle-Clamp "
Configuration



Heavy-Duty Grapple Rakes with 2 Independent Top Clamps

- Pin-on • Quick-Coupler • Requires 3rd Function Hydraulics
- Optional " Paddle " Top Clamp • H.D. Enclosed Cylinders
- Most All O.E.M. Quick-Coupler "Hook-ups" Available

Superior Performance and Durability

TAG Manufacturing, Inc. • Chattanooga, TN





Wheel Loader Attachments With Heavy Duty Versatility



Severe-Duty Bio-Mass Rakes with Wider 2 Independent Top Clamps

- Pin-on, or Quick-Coupler
- Cylinder Towers and Hinge Points Are Fully Integrated Extensions of the Vertical Upper Struts
- Full Mechanical Clamp Stops
- H.D. Cylinders
- Special Top Clamp Design With Enclosed Clamp and Rake Sections For MAX Material Retention
- Requires 3rd Function Hydraulics
- Most All O.E.M. Quick-Coupler Hook-ups Available

Designed to Push-Up the Pile



**Skidder-Tire Special Widths
Available With Wider Carriages for Construction and Logging**

Superior Performance and Durability

TAG Manufacturing, Inc. • Chattanooga, TN





*Buckets, Couplers and Attachments
that Deliver the Maximum*

***At TAG Manufacturing, Inc. We Strive to Offer You the Most Performance and
Engineering Features Available in the Market Today in All Our Products***

***Coupled with the Highest Quality Materials and Components Obtainable and with
World Class Innovative Manufacturing Processes that are Held to Rigid Quality Standards
That Delivers Superior Performance and Durability In All of Our Products***



Exclusive Limited One 1 Year Warranty

**TAG Manufacturing, Inc. warrants its new products to be free from defects
and workmanship for a period of one 1 year from the date of original purchase**

Disclaimer subject to the terms and conditions of our published " Limited Warranty and Procedures " contained within our Price Book

Contact Your Local Dealer



Superior Performance and Durability

TAG Manufacturing, Inc.

6989 Discovery Drive • Chattanooga, TN 37416

423-893-3345 • Fax 423-893-3385

